

AC TRANSIT
BRT NORTHERN LAYOVER BREAKROOM
2103 SAN PABLO AVENUE
OAKLAND, CA
PROJECT # P2004

ABBREVIATIONS		VICINITY MAP		APPLICABLE CODES		DRAWING INDEX	
<div>AB AGGREGATE BASE ANCH ANCHOR APPROX APPROXIMATELY BGS BELOW GROUND SURFACE BLDG BUILDING BG BELOW GRADE CB CATCH BASIN CBC CALIFORNIA BUILDING CODE CLR CLEAR CONC CONCRETE CJ CONSTRUCTION JOINT DI DRAIN INLET DIA DIAMETER DN DOWN DW DOMESTIC WATER DWG DRAWING EA EACH EF EACH FACE EW EACH WAY EQ EQUAL (E), EXST EXISTING EXT EXTERIOR EXP. EXPANSION FF FINISHED FLOOR FG FINISHED GRADE FTG FOOTING FDN FOUNDATION FL FLOW LINE G GAS GA GAGE GB GRADE BREAK HDPE HIGH DENSITY POLETHLENE HORIZ HORIZONTAL IW INDUSTRIAL WASTE INV INVERT JT JOINT LF L.F. LINEAR FEET LONG LONGITUDINAL</div> <div>MFR MANUFACTURER MATL MATERIAL MAX MAXIMUM MIN MINIMUM N NORTH (N) NEW NIC NOT IN CONTRACT NTS NOT TO SCALE OC ON CENTER OPNG OPENING OPP OPPOSITE OD OUISIDE DIAMETER PCC PORTLAND CEMENT CONCRETE PVMNT PAVEMENT R RADIUS REF REFERENCE RC RELATIVE COMPACTION S SLOPE SD STORM DRAIN SDCO STORM DRAIN CLEAN OUT SS SANITARY SEWER SW STORMWATER SPEC SPECIFICATION STD STANDARD STL STEEL SYMM SYMMETRICAL TOC TOP OF CONCRETE TOS TOP OF STEEL TC TOP OF CURB TD TRENCH DRAIN TG TOP OF GRATE TP TOP OF PAVEMENT TYP TYPICAL TOT TOTAL UON UNLESS OTHERWISE NOTED UST UNDERGROUND STORAGE TANK W/ WITH WWM WELDED WIRE MESH REINF.</div>		<div><p>PROJECT SITE</p></div>		<div>2019 CALIFORNIA BUILDING CODE 2019 CALIFORNIA PLUMBING CODE 2019 CALIFORNIA MECHANICAL CODE 2019 CALIFORNIA ELECTRICAL CODE 2019 CALIFORNIA ENERGY CODE 2019 CALIFORNIA GREEN BUILDING CODE</div> <div>SITE INFORMATION</div> <div><div>SITE NAME: GREYHOUND BUS STATION</div><div>ADDRESS: 2103 SAN PABLO AVENUE OAKLAND, CA</div></div> <div><div><p>CONTACT USA NORTH 811, UNDERGROUND SERVICE ALERT 48 HOURS BEFORE YOU DIG</p><p>811 or 800-642-2444 www.usanorth811.org</p></div><div><p>IMPORTANT NOTICE</p><p>SECTION 4216/4217 OF THE GOVERNMENT CODE REQUIRES A DIGALERT IDENTIFICATION NUMBER BE ISSUED BEFORE A "PERMIT TO EXCAVATE" WILL BE VALID. FOR YOUR DIGALERT I.D. NUMBER CALL UNDERGROUND SERVICE ALERT TOLL FREE 1-800-642-2444 TWO WORKING DAYS BEFORE YOU DIG</p></div></div>		<div><div>SHEET DWG NO. SHEET TITLE</div><div>1 C0-TITLE SHEET</div><div>2 C1-GENERAL NOTES</div><div>3 C2-DEMOLITION PLAN</div><div>4 C3-FLOOR PLAN</div><div>5 C4-INTERIOR ELEVATIONS</div><div>6 C5-DETAILS</div><div>7 M1-MECHANICAL FLOOR PLAN</div><div>8 M2-MECHANICAL ROOF PLAN</div><div>7 P1-PLUMBING PLAN</div><div>8 E1-ELECTRICAL PLAN</div></div> <div>SCOPE OF PROJECT</div> <div>THESE PLANS ARE FOR RENOVATION OF AN EXISTING TENANT SPACE FOR A NEW AC TRANSIT BREAKROOM AT THE GREYHOUND BUS TERMINAL. THE WORK INCLUDES REMOVAL OF RESTROOM FIXTURES, WALLS, LIGHTING FIXTURES, FLOOR DRAINS, AND MISCELLANEOUS ITEMS, AND INSTALLING NEW RESTROOM FIXTURES, FLOORING, WALL COVERINGS, CABINETS AND SINK, APPLIANCES AND FURNITURE, AND INCLUDES PLUMBING, ELECTRICAL, COMMUNICATIONS SYSTEMS.</div>	
<div><div><div>No.</div><div>ISSUES/ REVISIONS</div><div>Date</div><div>App'd</div></div><div><div>1</div><div>BID SET</div><div>1-30-2020</div><div></div></div><div><div>2</div><div>DELETE MECHANICAL SHEETS; ADD PLUMBING DRAWING</div><div>2-11-2020</div><div></div></div><div><div>3</div><div></div><div></div><div></div></div><div><div>4</div><div></div><div></div><div></div></div><div><div>5</div><div></div><div></div><div></div></div><div><div>6</div><div></div><div></div><div></div></div></div>		<div></div> <div>REFERENCES:</div> <div>CHOW ENGINEERING, INC. 7770 PARDEE LANE, SUITE 100 OAKLAND, CA 94621 Phone: (510) 636-8500 Fax: (510) 636-8544 info@choweng.com http://choweng.com</div>		<div>PROFESSIONAL SEAL:</div> <div><div>DESIGNED BY: DEAN WANZEK</div><div>DRAWN BY: DEAN WANZEK</div><div>CHECKED BY: X</div><div>A-E PROJECT MANAGER: LISA KIMURA</div><div>ACT DIVISION MANAGER: X</div><div>ACT PROJECT MANAGER: JASON AUYEUNG</div><div>CONTRACT # NUMBER 2019-_____</div></div>		<div>BRT NORTHERN LAYOVER BREAKROOM OAKLAND, CA</div> <div>BRT NORTHERN LAYOVER BREAKROOM TITLE SHEET</div> <div><div>SIZE: D</div><div>SCALE: AS NOTED</div><div>DATE: 2-11-2020</div></div> <div><div>AC TRANSIT PROJECT NUMBER: P2004</div><div>CAD FILE: 19R-118 C0 - C1</div></div> <div><div>DRAWING NO.: C-0</div><div>SHEET 1 OF 8</div></div>	

19R-118 C0 - C1.dwg
1/30/2020 5:20 PM
DWG: CE

GENERAL NOTES

1. ALL WORK SHALL BE IN COMPLIANCE WITH THE 2019 CALIFORNIA BUILDING CODE, 2019 CALIFORNIA FIRE CODE, 2019 CALIFORNIA MECHANICAL CODE, 2019 CALIFORNIA ELECTRICAL CODE, 2019 CALIFORNIA PLUMBING CODE, AND ALL APPLICABLE LOCAL, STATE, AND FEDERAL LAWS AND REGULATIONS.
2. THE CONTRACTOR SHALL ASSUME SOLE AND COMPLETE RESPONSIBILITY FOR JOB SITE CONDITIONS, INCLUDING SAFETY OF ALL PERSONS AND PROPERTY, DURING THE COURSE OF CONSTRUCTION OF THIS PROJECT. THIS REQUIREMENT SHALL APPLY CONTINUOUSLY AND NOT BE LIMITED TO NORMAL WORKING HOURS.
3. PRIOR TO COMMENCING CONSTRUCTION, THE CONTRACTOR SHALL VERIFY EXISTING DIMENSIONS, ELEVATIONS, AND CONDITIONS. INCLUDING CONDITIONS FOR GRADING, DRAINAGE AND UNDERGROUND FACILITIES. IF CONDITIONS DIFFER FROM THOSE SHOWN ON THE PLANS, THE CONTRACTOR SHALL NOTIFY THE ENGINEER AND SHALL NOT BEGIN CONSTRUCTION UNTIL THE CHANGED CONDITIONS HAVE BEEN EVALUATED.
4. THE CONTRACTOR SHALL BE RESPONSIBLE FOR REVIEW AND COORDINATION OF ALL PROJECT DOCUMENTS, DRAWINGS, AND SPECIFICATIONS PRIOR TO THE START OF CONSTRUCTION. ANY DISCREPANCIES, OMISSIONS, AND/OR CONFLICTS WITH CODE REQUIREMENTS SHALL BE REPORTED TO THE OWNER'S REPRESENTATIVE PRIOR TO THE START OF CONSTRUCTION SO THAT A CLARIFICATION CAN BE ISSUED. ANY WORK PERFORMED IN CONFLICT WITH THE CONTRACT DOCUMENTS OR IN CONFLICT WITH ANY CODE REQUIREMENTS SHALL BE CORRECTED BY THE CONTRACTOR AT THEIR OWN EXPENSE AND AT NO EXPENSE TO THE OWNER OR ENGINEER.
5. THE CONTRACTOR SHALL DEFEND, INDEMNIFY AND HOLD THE ENGINEER, OWNER, THEIR AGENTS, EMPLOYEES AND ASSOCIATED PARTIES HARMLESS FROM ANY AND ALL LIABILITY, REAL OR ALLEGED, IN CONNECTION WITH THE PERFORMANCE OF WORK ON THIS PROJECT.
6. ANY DEVIATION, SUBSTITUTION OR ALTERATION TO THE DESIGN SHALL BE SUBJECT TO REVIEW BY THE ENGINEER.
7. THE EXISTENCE, LOCATION AND CHARACTERISTICS OF UTILITY INFORMATION SHOWN HAS BEEN OBTAINED FROM A REVIEW OF AVAILABLE RECORDS DATA. NO REPRESENTATION IS MADE AS TO THE ACCURACY OR COMPLETENESS OF SAID UTILITY INFORMATION. THE CONTRACTOR SHALL TAKE PRECAUTIONARY MEASURES TO PROTECT THE UTILITY LINES WHETHER SHOWN OR NOT ON THESE PLANS.
8. THE CONTRACTOR SHALL REPAIR OR REPLACE ANY DAMAGE TO EXISTING FACILITIES AND UTILITIES OCCURRING DURING THE COURSE OF DEMOLITION, EXCAVATION, OR CONSTRUCTION, WHETHER RESULTING DIRECTLY OR INDIRECTLY FROM THEIR OPERATIONS, WHETHER OR NOT SHOWN ON THESE DRAWINGS, WITHOUT ADDITIONAL COST TO THE OWNER.
9. DRAWINGS INDICATE GENERAL AND TYPICAL DETAILS OF CONSTRUCTION. WHERE CONDITIONS ARE NOT SPECIFICALLY INDICATED BUT ARE OF SIMILAR CHARACTER TO DETAILS SHOWN, SIMILAR DETAILS OF CONSTRUCTION SHALL BE APPLIED, SUBJECT TO REVIEW BY THE ENGINEER.
10. THE CONTRACTOR SHALL SUBMIT "AS-BUILT" DRAWINGS TO AC TRANSIT UPON COMPLETION OF WORK. RETENTIONS SHALL NOT BE RELEASED PRIOR TO THE CONTRACTOR'S SUBMITTAL OF APPROVED "AS-BUILTS".

CONSTRUCTION

1. FIRE EXTINGUISHER: CONTRACTOR SHALL PROVIDE AND MAINTAIN AT LEAST ONE (1) PORTABLE FIRE EXTINGUISHER OF THE TYPE SIZE APPROVED BY THE FIRE DEPARTMENT FIELD INSPECTOR AT THE JOB SITE THROUGHOUT CONSTRUCTION.
2. NO HAZARDOUS MATERIALS: NO HAZARDOUS CHEMICALS OR MATERIALS SHALL BE USED OR STORED IN THIS AREA OR ADJACENT AREAS TO THIS PROJECT.
3. COMPLY W/DRAWINGS: IT SHALL BE THE RESPONSIBILITY OF THE CONTRACTOR TO COORDINATE, SUPERVISE, AND COMMUNICATE WITH THE ENGINEER, OWNER, AND SUBCONTRACTORS ALL WORK TO INSURE CONFORMANCE WITH THE APPROVED DRAWINGS AND SPECIFICATIONS.
4. HOT WORK: PRIOR WRITTEN APPROVAL AND HOT WORK PERMITS ARE REQUIRED FOR ALL FIELD WELDING AND HOT WORK OPERATIONS.
5. SITE CLEANLINESS: THE CONTRACTOR SHALL BE RESPONSIBLE FOR THE DAILY REMOVAL AND LEGAL DISPOSAL OF ALL DEMOLITION SPOILS AND REMOVED MATERIALS. THE CONTRACTOR MAY NOT STOCKPILE OR STORE ANY NEW OR REMOVED MATERIAL ON SITE.
6. SITE CONTROL: MEASURES SHALL BE TAKEN TO PROTECT THE PUBLIC FROM CONSTRUCTION ACTIVITIES AT ALL TIMES.
7. TEMPORARY FACILITIES: DURING CONSTRUCTION, CONTRACTOR SHALL PROVIDE TWO (2) PORTAPOTTIES WITH HAND WASHING STATIONS FOR USE BY AC TRANSIT DRIVERS UNTIL BREAKROOM RESTROOMS ARE OPERATIONAL.

BILL OF MATERIALS:

NOTE	ITEM	QTY	MANUFACTURER*	CALL-OUT (DESCRIPTION)*
1	KITCHEN CABINETS WITH ONE (1) CABINET LOCK	1	ALLEN + ROTH	SINK BASE CUSTOM CABINET, ALLEN + ROTH 36-IN W X 34.5-IN H X 24-IN D STONE MAPLE (#20350)
		2	ALLEN + ROTH	DOOR AND DRAWER BASE CUSTOM CABINET, ALLEN + ROTH STONEWALL 36-IN W X 34.5-IN H X 24-IN D STONE MAPLE (#20807)
		3	ALLEN + ROTH	WALL CUSTOM CABINET, ALLEN + ROTH 36-IN W X 30-IN H X 12-IN D, STONE MAPLE (#1361)
		1		CABINET LOCK & KEY (FOR W3636)
2	WATER FILTRATION SYSTEM UNDER SINK	1	GENERAL ELECTRIC	UNDER SINK DUAL FLOW WATER FILTRATION SYSTEM
3	COMMERCIAL GRADE FAUCET & SINK	1	KOHLER	25"x22"x7-11/16" TOP-MOUNT SINGLE-BOWL KITCHEN SINK WITH THREE FAUCET HOLES, FOUNDATIONS 2-HANDLE STANDARD KITCHEN FAUCET IN STAINLESS (21987LF-SS)
4	COUNTERTOP WITH BACKSPLASH	1		GRANITE COUNTERTOP WITH SINK CUTOUT, 4" BACKSPLASH
5	TOE KICK	1		STAINLESS STEEL TOE KICK 4"
6	REFRIGERATOR (POWDERCOAT, GRAY)	1	FRIGIDAIRE GALLERY	18 CU FT TOP FREEZER REFRIGERATOR STAINLESS STEEL (FFTR1814T5)
7	MICROWAVE	1	GENERAL ELECTRIC	PROFILE 2.2 CU FT COUNTERTOP MICROWAVE IN STAINLESS STEEL WITH SENSOR COOKING
8	NEW TOILET WITH SENSOR	2	TOTO	FOR FLOOR-MOUNT: FLUSHOMETER TOILET, 1.28GPF (CT706EN), ECOMPOWER HIGH EFFICIENCY TOILET FLUSH VALVE, 1.28 GPF (TET3LA), TOTO SC534 TOILET SEAT OR FOR WALL-MOUNT: FLUSHOMETER TOILET, 1.28GPF (CT708EG), WITH HIGH EFFICIENCY FLUSHOMETER VALVE (TET3LA), TOTO SC534 TOILET SEAT
9	NEW SINK (LAVATORY)	2	ZURN	Z5340 SERIES LAVATORY, SINGLE HOLE SINK Z5341
10	FAUCET WITH TEMPERATURE VALVE	2	ZURN	BATTERY-POWERED SINGLE HOLE TOUCHLESS BATHROOM FAUCET WITH PLUG-IN POWER SUPPLY IN POLISHED CHROME (Z6915-XL-ACA)
11	SOAP DISPENSER	2	BOBRICK	SOAP DISPENSER, B2111
12	NEW TOILET PAPER DISPENSER - JUMBO ROLL	2	GEORGIA-PACIFIC	TRANSLUCENT SMOKE JUMBO JR. BATHROOM TISSUE DISPENSER 2 ROLLS (GPC59209)
13	NEW GRAB BARS	2	KOHLER	36-INCH GRAB BAR, POLISHED STAINLESS (K-10544-S)
		2	KOHLER	48-INCH GRAB BAR, POLISHED STAINLESS (K-11897)
14	NEW TOILET SEAT COVER DISPENSER	2	BOBRICK	STAINLESS STEEL TOILET SEAT COVER DISPENSER, 15 3/4 X 2 X 11, SATIN FINISH (BOB221)
15	HAND DRYER	2	EXCEL DRYER	XLERATOReco HAND DRYER, XL-W-ECO
16	MIRROR WITH SHELF	2	BOBRICK	WELDED FRAME 18X36 MIRROR WITH SHELF (B-292 1836)
17	TRASH BIN	2	BOBRICK	FLOOR-STANDING OPEN-TOP INDUSTRIAL WASTE RECEPTACLE (B-2260)
18	ALUMINUM SIGN FOR TOILETS	2	MYDOORSIGN	"DO NOT THROW PAPER TOWELS, ...IN TOILET" SIGN (S-7358), 7"x10", ALUMINUM
19	MOTION SENSOR LIGHT	1	LUTRON	MAESTRO MOTION SENSOR SWITCH, WHITE
20	BULLETIN BOARD	1		WALL MOUNTED BULLETIN BOARD, 3'X5'
21	BREAKROOM TABLE AND 4 CHAIRS (BY OTHERS)			OWNER FURNISHED
22	LOUNGE TABLE AND 3 CHAIRS (BY OTHERS)			OWNER FURNISHED
23	TRASH CANS (BY OTHERS)			OWNER FURNISHED
24	DESK AND CHAIRS (BY OTHERS)			OWNER FURNISHED
25	TELEPHONE (LANDLINE)			OWNER FURNISHED
26	4'X8'X4" GRADE-APPLYWOOD MOUNTED 3" FROM FLOOR	4'X5'		3/4" PLYWOOD
27	EQUIPMENT MOUNTING RACK (PROVIDED BY AC TRANSIT)	1		EQUIPMENT MOUNTING RACK (PROVIDED BY AC TRANSIT)
28	NEW 3'X7' SINGLE EXTERIOR DOOR, 14 GA STEEL, LOCKSET SHALL BE SCHLAGE MODEL 200 CO WITH CONDUCTIVE HINGE IN FRAME. SCHLAGE B-600 SERIES COMMERCIAL SERIES DEAD BOLT	3		3'X7' SINGLE EXTERIOR DOOR, 14 GA STEEL, REINFORCED WITH 14 GA STEEL RIBS AT 6", REINFORCED WITH A WELDED PLATE FOR DOOR CLOSER MOUNTING. PAINTED TO MATCH EXISTING. LOCKSET SHALL BE SCHLAGE MODEL 200 CO WITH CONDUCTIVE HINGE IN FRAME. SCHLAGE B-600 SERIES COMMERCIAL SERIES DEAD BOLT
29	MOUNT AC TRANSIT CARD READER BOX NEXT TO DOOR ADJACENT TO LOCKSETS.	3		PROVIDE 1"-IN-WALL CONDUIT FROM EACH CARD READER BOX TO NEW PLYWOOD PANEL. A SECOND 1" CONDUIT SHALL BE PROVIDED FROM THE CONDUCTIVE HINGE TO THE WOOD PANEL.
30	SECURITY CAMERAS	3	AC TRANSIT TO PROVIDE INFORMATION	
31	NEW EPOXY FLOOR COATING THROUGHOUT INTERIOR	±1,100 SF	ROCK TRED	ARMOR-PLATE FULL FLAKE SYSTEM. 100% SOLIDS EPOXY FLOOR COATING. CHEM-ROCK PRIMER FOLLOWED BY 100% SOLIDS EPOXY CHEM-ROCK LV. FINAL FINISH TO BE ANTI-SLIP.
32	NEW CONCRETE CURB WITH BARRIER RAILING	16 FT		
33	FINISH CONCRETE RAMP	10 SF		
34	NEW INTERIOR PAINT, COLOR: TBD	TBD		TWO COATS, INTERIOR PAINT, COLOR: TBD.
35	NEW ELECTRICAL PANEL	1	SQUARED	SQUARED QO STYLE LOAD CENTER 125 AMP, 24 SPACES, 1 PHASE, 125 AMP MAIN CIRCUIT BREAKER & QO TYPE CIRCUIT BREAKERS
36	NEW WATER HEATER	3	ATMOR	SINGLE SINK 3KW/110V ELECTRIC TANKLESS WATER HEATER 0.5 GPM
37	Not Used			
38	NEW EMERGENCY EXIT LIGHT	2	TCP	LED COMBO EMERGENCY EXIT LIGHT WITH GREEN LETTERING (20685) WITH 2 HEADED LED ADJUSTABLE LIGHTS
39	POWER STRIP	1	LEGRAND	LEGRAND PREWIRED RACEWAY MODEL V20GB605, 12 OUTLET, 15 AMP
40	RESTORATION			MATCH EXISTING IN REST ROOMS WHERE PARTITION WALLS REMOVED
41	RESTROOM LIGHTS	2	LITHONIA	WL440LEZ12P835, 4" WALL MOUNT, 120V, 3500 K COLOR, 40 LUMENS, 40 WATTS, OCCUPANCY CONTROL AND SENSOR
42	BREAKROOM/KITCHEN LIGHTS	8	LITHONIA	4" LONG, CEILING SUSPENDED, LED WRAP AROUND LIGHT FIXTURES, WHITE, 40 LUMENS, 37W, 120V, CURVED LINEAR PRISM, 5000K TEMP, MODEL BLWP 440L ADP E21 LP850, E21 DIMMER WITH BLWPCG AIRCRAFT CABLE SUSPENSION FOR EACH FIXTURE
43	ELECTRICAL ROOM LIGHTS	2	LITHONIA	SAME AS BREAKROOM LIGHTS
44	VENTILATION FAN	2	PANASONIC	PRECISION SPOT VENTILATION FAN WITH DUAL SENSOR TECHNOLOGY, MODEL FV-051VOC1
45	WALL-MOUNTED INDOOR UNIT FOR MULTI-ZONE	1	MTSUBISHI ELECTRIC	TRANE & MITSUBISHI ELECTRIC MODEL #N7XWST18A112A OR EQUAL: WALL MOUNTED 1.5 TON DATAMATE EVAPORATOR UNIT, 6000 BTUH, 230 V, 2 PHASE, R410A REFRIGERANT
46	WALL-MOUNTED INDOOR UNIT FOR MULTI-ZONE	1	MTSUBISHI ELECTRIC	TRANE & MITSUBISHI ELECTRIC MODEL #N7XWST18A112A OR EQUAL: WALL MOUNTED 1.5 TON DATAMATE EVAPORATOR UNIT, 6000 BTUH, 230 V, 2 PHASE, R410A REFRIGERANT
47	MULTI-INDOOR INVERTER HEAT PUMP SYSTEM	1	MTSUBISHI ELECTRIC	TRANE & MITSUBISHI ELECTRIC MODEL #N7XWMM24A132AA OR EQUAL: 24000 BTUH, 230V, 2 PHASE, R410A REFRIGERANT
				* OR ENGINEER APPROVED EQUAL

19R-118 C0 - C1.dwg
13/02/2025 5:20 PM
D:\DWG_C1


No.	ISSUES/ REVISIONS	Date	App'd
1	BID SET	1-30-2020	
1	UPDATED BILL OF MATERIALS	2-11-2020	

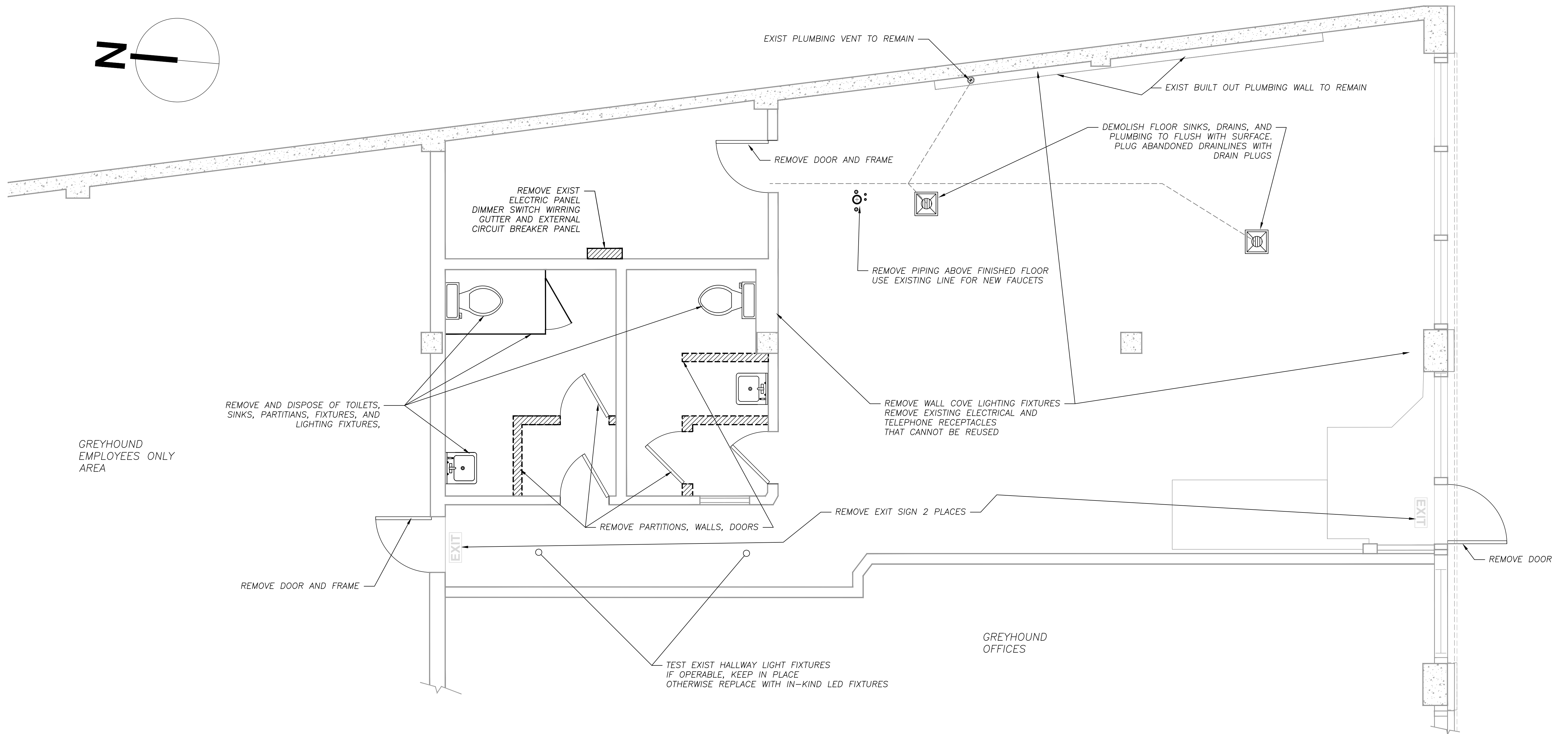

REFERENCES:


CHOW ENGINEERING, INC. 7770 PARDEE LANE, SUITE 100 OAKLAND, CA 94621 Phone: (510) 636-8500 Fax: (510) 636-8544 info@choweng.com http://choweng.com

PROFESSIONAL SEAL:

DESIGNED BY:	DEAN WANZEK	
DRAWN BY:	DEAN WANZEK	
CHECKED BY:	X	
A-E PROJECT MANAGER:	LISA KIMURA	
ACT DIVISION MANAGER:	X	
ACT PROJECT MANAGER:	JASON AUYEUNG	
CONTRACT # NUMBER	2019-_____	

	BRT NORTHERN LAYOVER BREAKROOM OAKLAND, CA		
	BRT NORTHERN LAYOVER BREAKROOM GENERAL NOTES		
SIZE: D	SCALE: AS NOTED	DATE: 2-11-2020	
AC TRANSIT PROJECT NUMBER: P2004	DRAWING NO.: C-1		
CAD FILE: 19R-118 C0 - C1 2007	SHEET 2 OF 8		



1 DEMOLITION PLAN
Scale: 1:30

1/30/2020 2:25 PM
19R-118 C2 - C3.dwg
D:\DWG

No.	ISSUES/ REVISIONS	Date	App'd
1	BID SET	1-24-2020	
2			
3			
4			
5			
6			




REFERENCES:

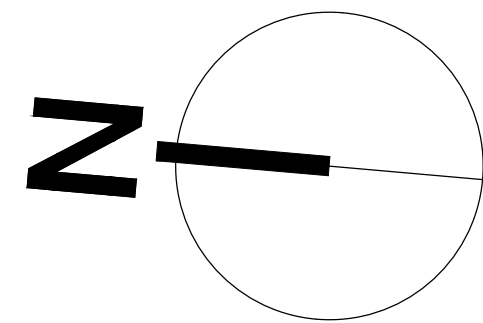


CHOW ENGINEERING, INC.
7770 PARDEE LANE, SUITE 100
OAKLAND, CA 94621
Phone: (510) 636-8500 Fax: (510) 636-8544
info@choweng.com
http://choweng.com

PROFESSIONAL SEAL:

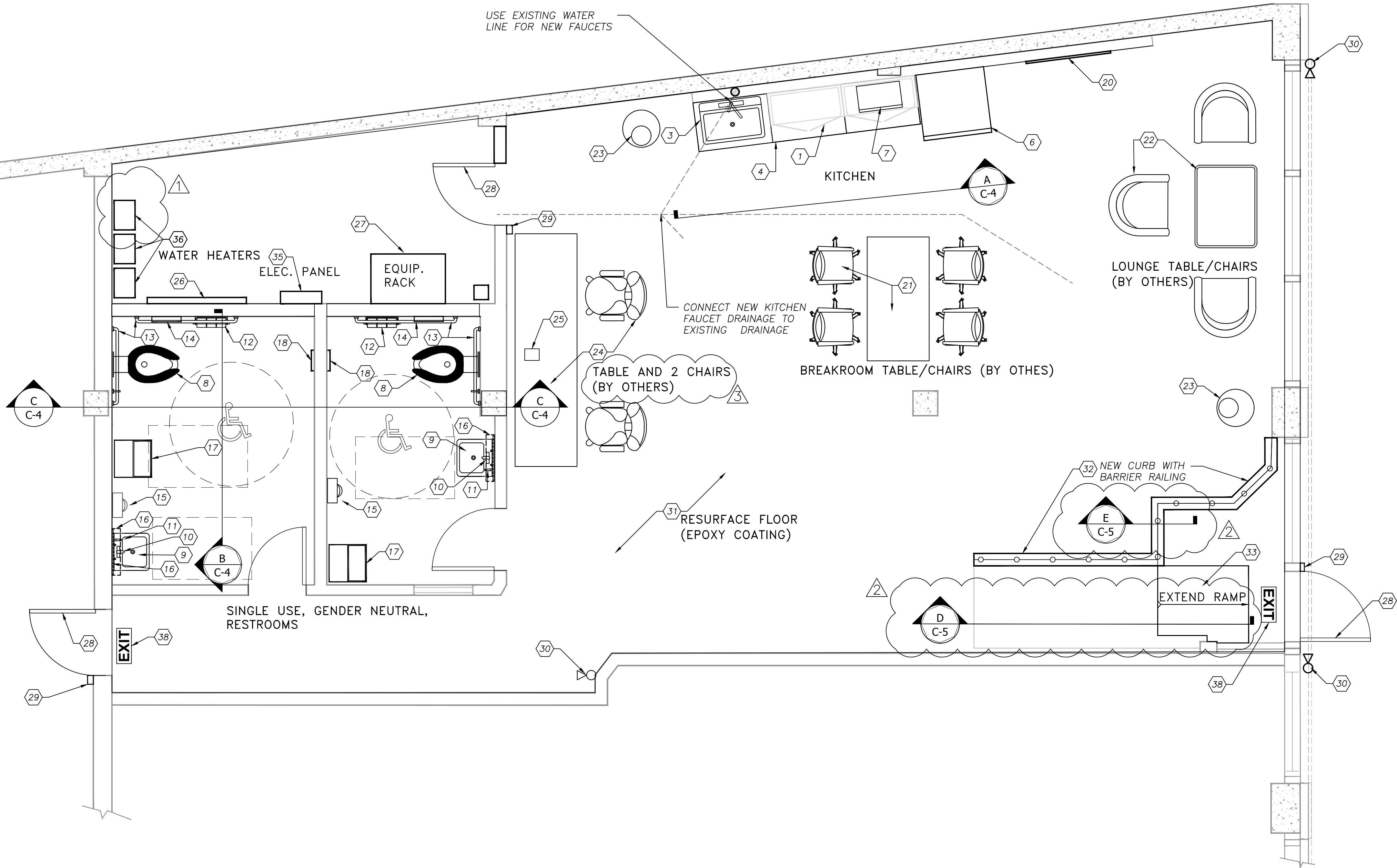
DESIGNED BY:	DEAN WANZEK
DRAWN BY:	DEAN WANZEK
CHECKED BY:	X
A-E PROJECT MANAGER:	LISA KIMURA
ACT DIVISION MANAGER:	X
ACT PROJECT MANAGER:	JASON AUYEUNG
CONTRACT #	NUMBER 2020-_____

 BRT NORTHERN LAYOVER BREAKROOM OAKLAND, CA		
BRT NORTHERN LAYOVER BREAKROOM DEMOLITION PLAN		
SIZE: D	SCALE: AS NOTED	DATE: 2-11-2020
AC TRANSIT PROJECT NUMBER: P2004		DRAWING NO.: C-2
CAD FILE: 19R-118 C2 - C3 - 2007		SHEET 3 OF 8



LEGEND:

- 1. KITCHEN CABINETS WITH ONE (1) CABINET LOCK
- 2. WATER FILTRATION SYSTEM UNDER SINK
- 3. COMMERCIAL GRADE FAUCET & SINK
- 4. COUNTERTOP WITH BACKSPLASH
- 5. TOE KICK
- 6. REFRIGERATOR
- 7. MICROWAVE
- 8. NEW TOILET WITH SENSOR
- 9. NEW SINK (LAVATORY)
- 10. AUTOMATIC FAUCET WITH TEMPERATURE VALVE
- 11. SOAP DISPENSER
- 12. NEW TOILET PAPER DISPENSER – JUMBO ROLL
- 13. NEW GRAB BARS
- 14. NEW TOILET SEAT COVER DISPENSER
- 15. AIR HAND DRYER
- 16. MIRROR WITH SHELF
- 17. TRASH BIN
- 18. ALUMINUM SIGN
- 19. MOTION SENSOR LIGHT
- 20. BULLETIN BOARD
- 21. BREAKROOM TABLE & 4 CHAIRS, BY OTHERS (NIC)
- 22. LOUNGE TABLE & 3 CHAIRS, BY OTHERS (NIC)
- 23. TRASH CANS, BY OTHERS (NIC)
- 24. DESK AND CHAIRS (BY OTHERS, NIC)
- 25. PHONE (DESKTOP LANDLINE) (BY OTHERS, NIC)
- 26. 4'X5'X $\frac{3}{4}$ " GRADE A PLYWOOD MOUNTED 3' FROM FLOOR
- 27. EQUIPMENT MOUNTING RACK (PROVIDED BY AC TRANSIT) (NIC)
- 28. NEW DOOR
- 29. AC TRANSIT CARD READER BOX (NIC)
- 30. SECURITY CAMERA (NIC)
- 31. NEW EPOXY FLOOR COATING THROUGHOUT INTERIOR
- 32. NEW CONCRETE CURB WITH BARRIER RAILING
- 33. FINISH CONCRETE RAMP
- 34. NEW INTERIOR PAINT
- 35. NEW ELECTRICAL PANEL
- 36. NEW WATER HEATER
- 37. NEW MINI-SPLIT
- 38. NEW EMERGENCY EXIT LIGHT



1 FLOOR PLAN
Scale: 1:30

1/30/2020 2:25 PM
19R-118 C2 - C3.dwg
D:\DWG\CE

No.	ISSUES/ REVISIONS	Date	App'd
1	BID SET	1-30-2020	
2	DELETE MINI-SPLIT	2-11-2020	
3	ADD CROSS SECTIONS	2-11-2020	
4	ADD "BY OTHERS"	2-11-2020	
5			
6			




REFERENCES:



CHOW ENGINEERING, INC.
7770 PARDEE LANE, SUITE 100
OAKLAND, CA 94621
Phone: (510) 636-8500 Fax: (510) 636-8544
info@choweng.com
http://choweng.com

PROFESSIONAL SEAL:

DESIGNED BY:	DEAN WANZEK
DRAWN BY:	DEAN WANZEK
CHECKED BY:	X
A-E PROJECT MANAGER:	LISA KIMURA
ACT DIVISION MANAGER:	X
ACT PROJECT MANAGER:	JASON AUYEUNG
CONTRACT #	NUMBER 2020-_____



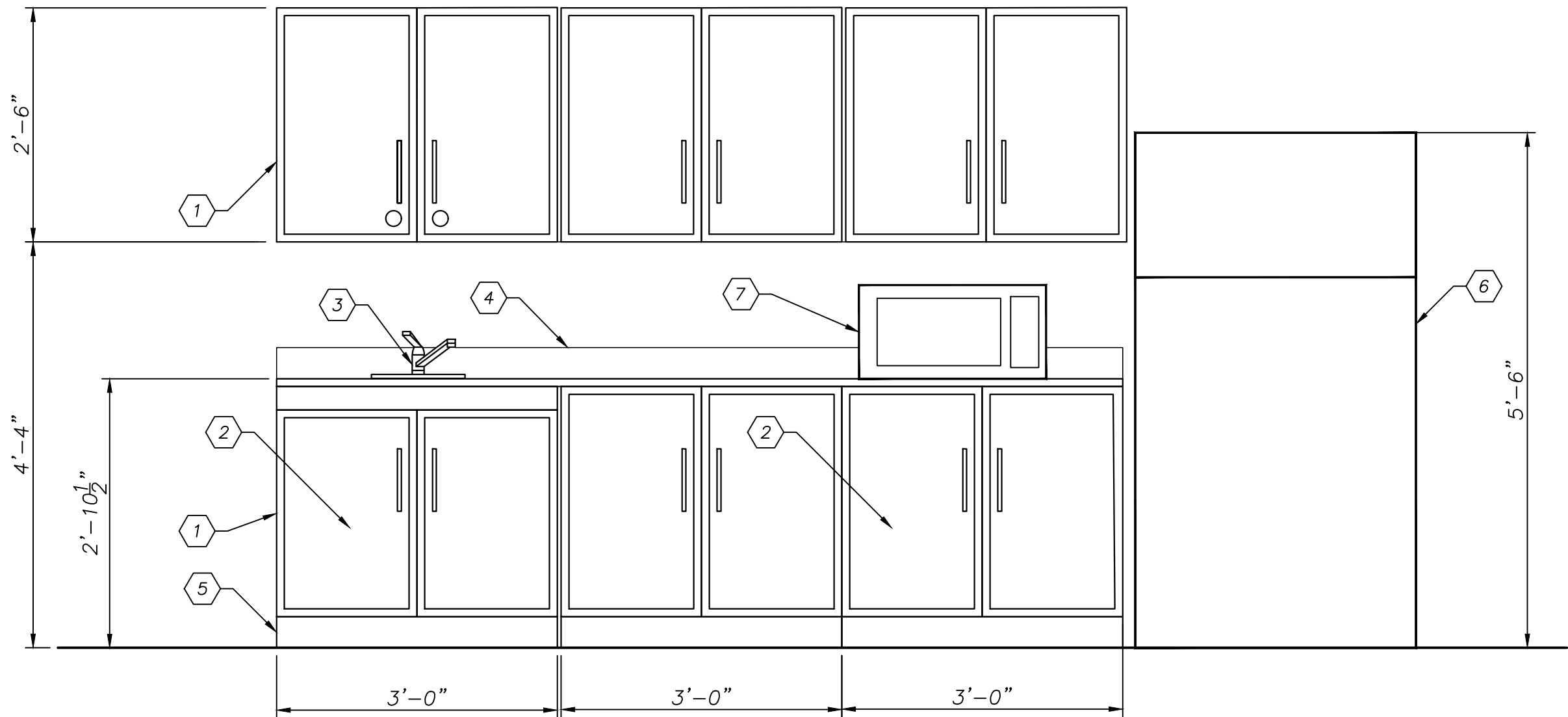
BRT NORTHERN LAYOVER BREAKROOM
OAKLAND, CA

BRT NORTHERN LAYOVER BREAKROOM
FLOOR PLAN

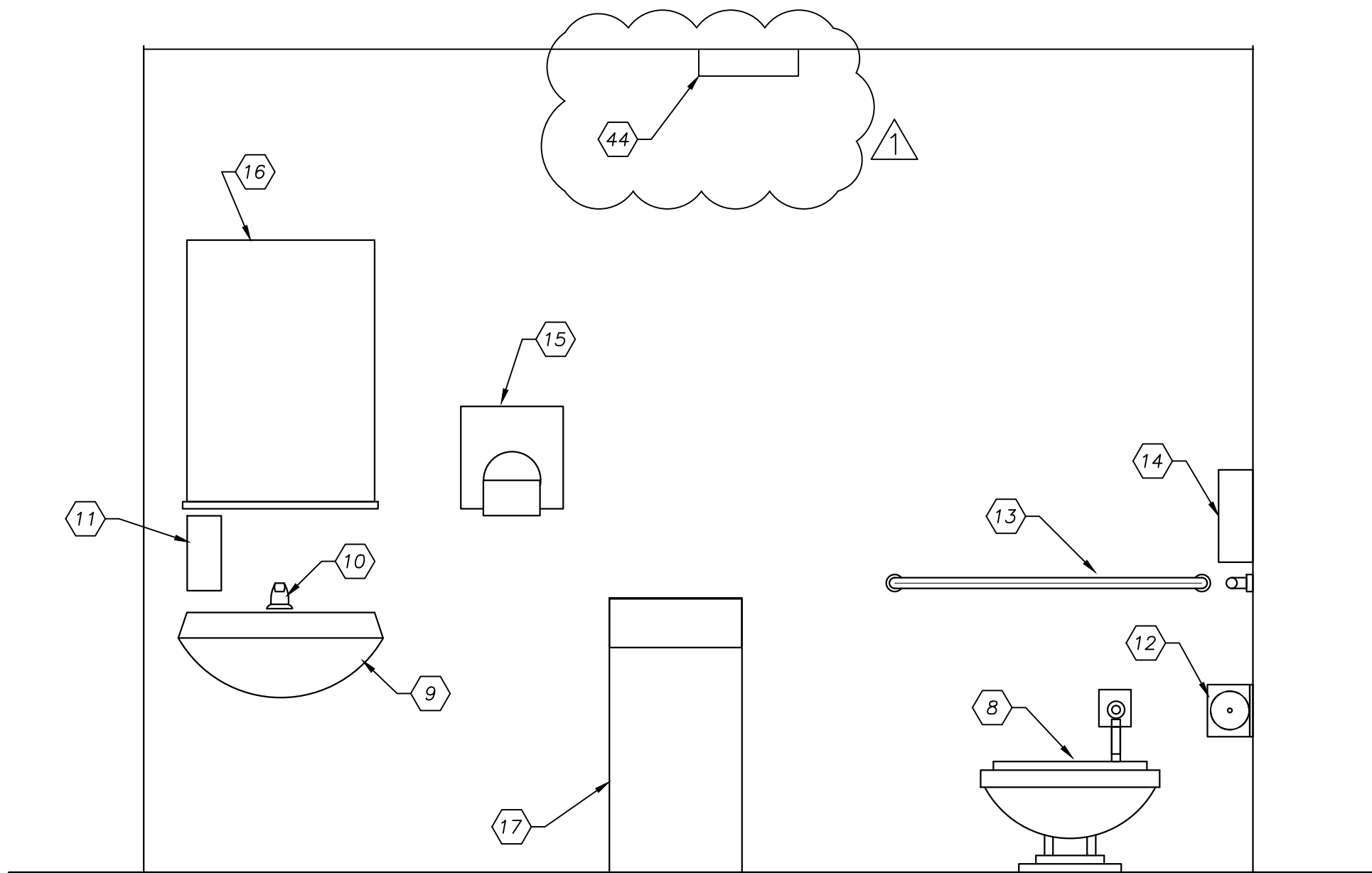
SIZE: D	SCALE: AS NOTED	DATE: 2-11-2020
AC TRANSIT PROJECT NUMBER: P2004	DRAWING NO.: C-3	
CAD FILE: 19R-118 C2 - C3 - 2007	SHEET 4 OF 8	

KEY:

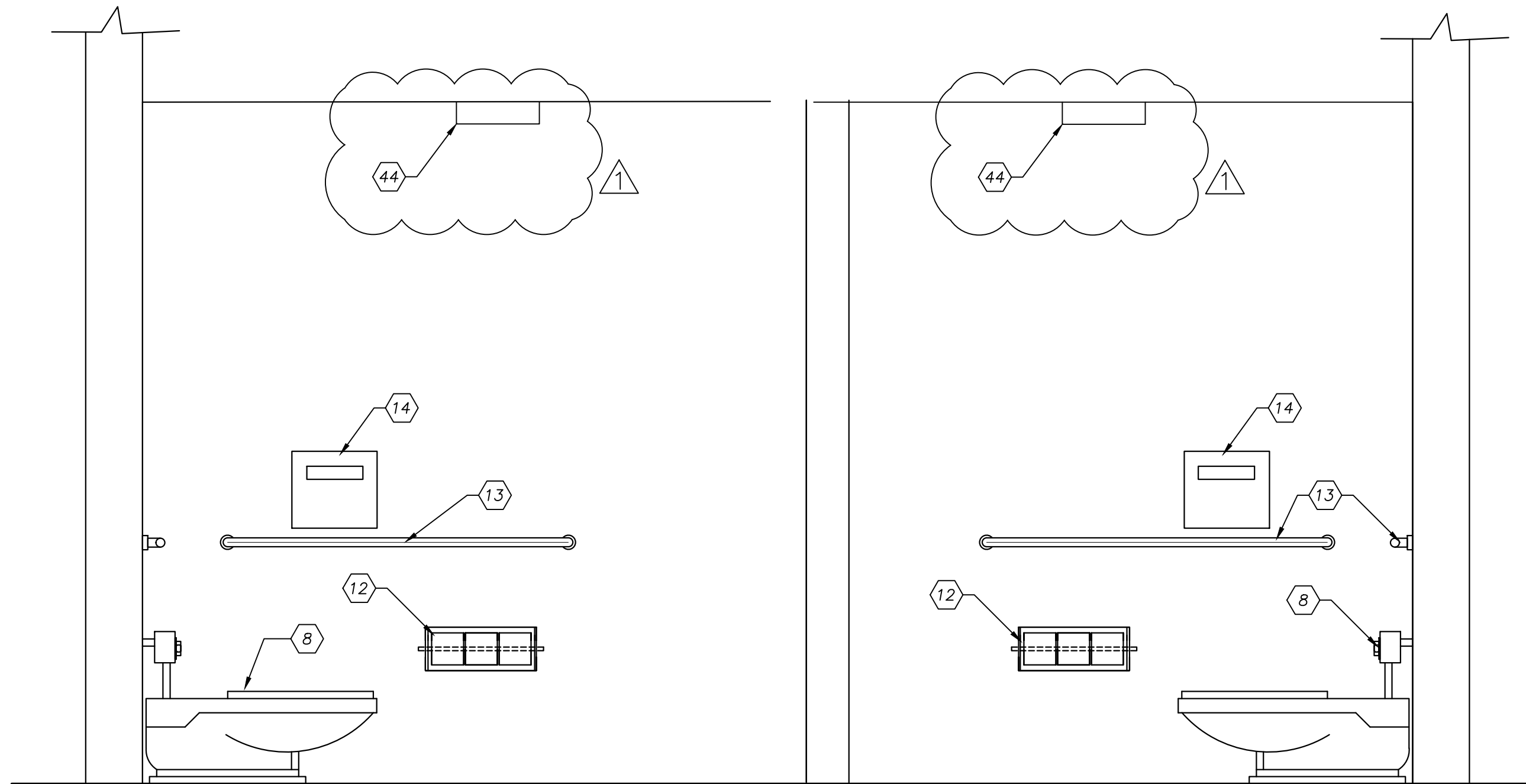
- 1. KITCHEN CABINETS WITH ONE (1) CABINET LOCK
- 2. WATER FILTRATION SYSTEM UNDER SINK
- 3. COMMERCIAL GRADE FAUCET & SINK
- 4. COUNTERTOP WITH BACKSPLASH
- 5. TOE KICK
- 6. REFRIGERATOR
- 7. MICROWAVE
- 8. NEW TOILET WITH SENSOR
- 9. NEW SINK (LAVATORY)
- 10. AUTOMATIC FAUCET WITH TEMPERATURE VALVE
- 11. SOAP DISPENSER
- 12. NEW TOILET PAPER DISPENSER – JUMBO ROLL
- 13. NEW GRAB BARS
- 14. NEW TOILET SEAT COVER DISPENSER
- 15. AIR HAND DRYER
- 16. MIRROR WITH SHELF
- 17. TRASH BIN
- 18. ALUMINUM SIGN
- 44. VENTILATION FAN (REPLACE FAN, CONNECT TO VENT OUTSIDE)



A
C-3 **KITCHEN ELEVATION**
Scale: 3/4" = 1'-0"



B
C-3 **BATHROOM ELEVATION**
Scale: NTS



C
C-3 **BATHROOM ELEVATION**
Scale: NTS

13/03/2020 2:25 PM
19R-118 C2 - C3.dwg
DWG: CE

No.	ISSUES/ REVISIONS	Date	App'd
1	BID SET	1-30-2020	
1	REPLACE VENTILATION FAN IN EACH RESTROOM	2-11-2020	

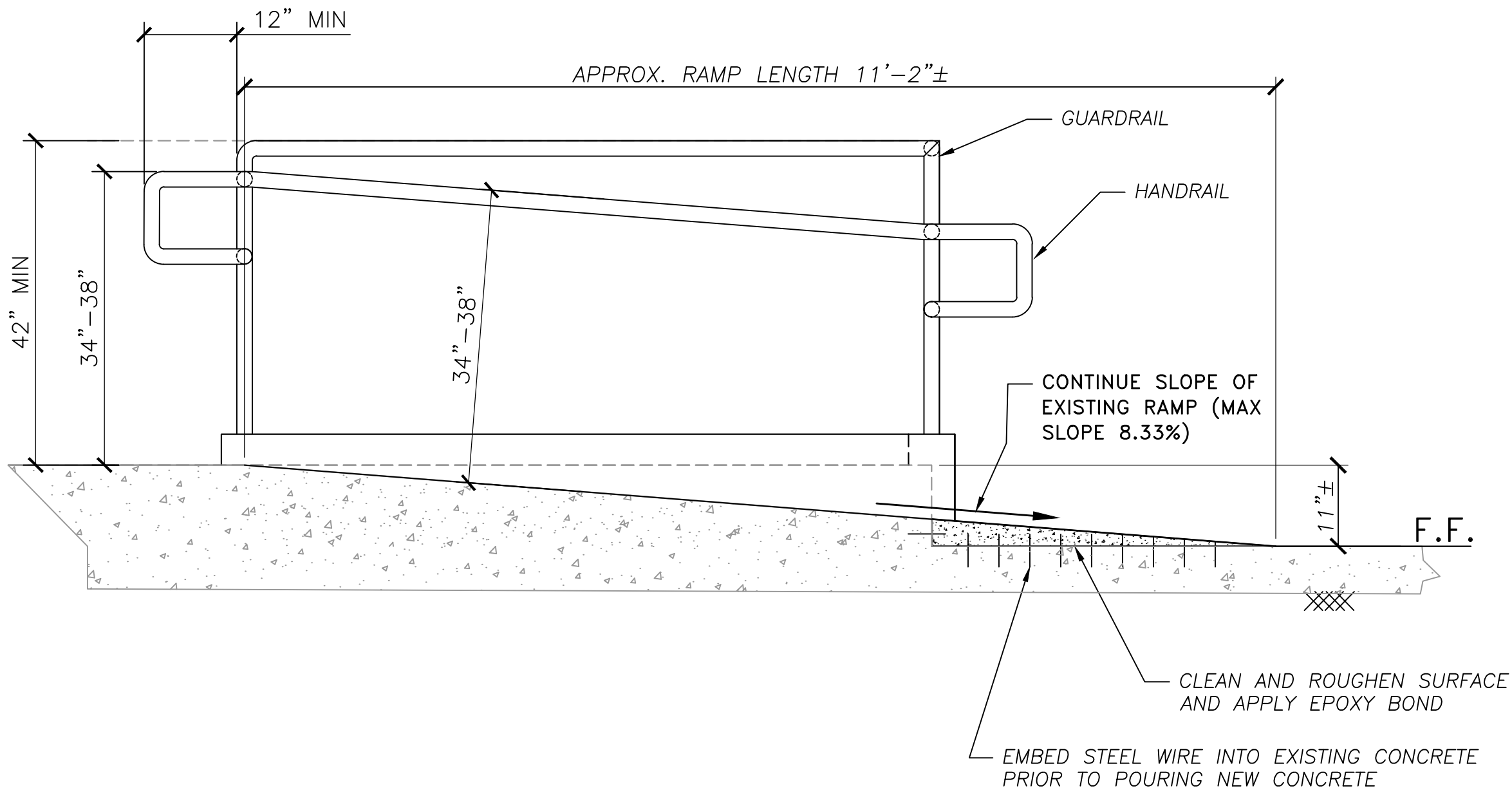
REFERENCES:

CHOW ENGINEERING, INC. 7770 PARDEE LANE, SUITE 100 OAKLAND, CA 94621 Phone: (510) 636-8500 Fax: (510) 636-8544 info@choweng.com http://choweng.com

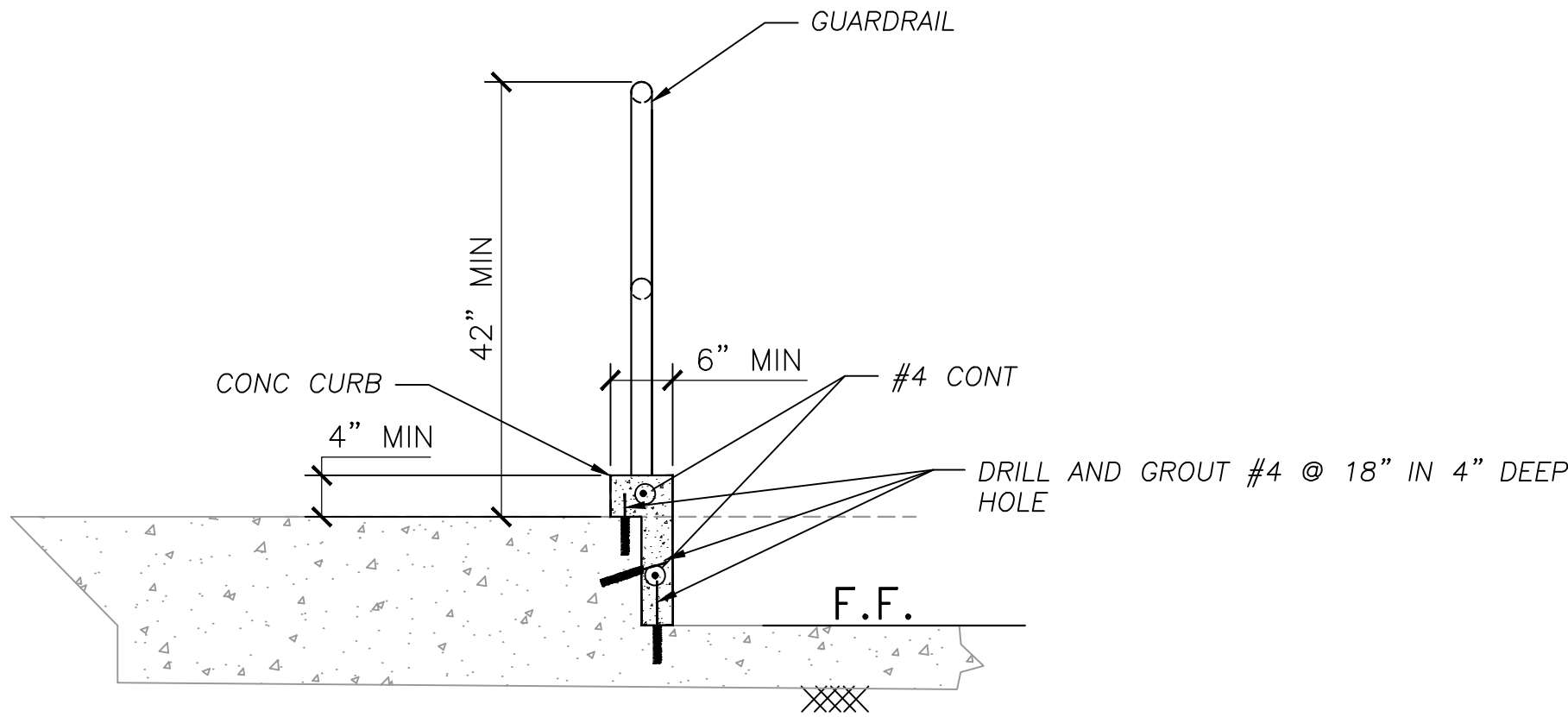
PROFESSIONAL SEAL:

DESIGNED BY:	-
DRAWN BY:	DEAN WANZEK
CHECKED BY:	X
A-E PROJECT MANAGER:	LISA KIMURA
ACT DIVISION MANAGER:	X
ACT PROJECT MANAGER:	JASON AUYEUNG
CONTRACT #	NUMBER 2020-_____

	BRT NORTHERN LAYOVER BREAKROOM OAKLAND, CA		
	BRT NORTHERN LAYOVER BREAKROOM INTERIOR ELEVATIONS		
SIZE: D	SCALE: AS NOTED	DATE: 2-11-2020	
AC TRANSIT PROJECT NUMBER: P2004		DRAWING NO.: C-4	
CAD FILE: 19R-118 C2 - C3 - 2007		SHEET 5 OF 8	



D
C5
EXTEND RAMP
Scale: NTS



E
C5
CURB & GUARDRAIL
Scale: NTS

DOOR SCHEDULE

NO.	SIZE	DESCRIPTION	LOCKSET	HANDLE
3	3'-0" X 7'-0" h	SINGLE EXTERIOR, 14 GA STEEL, REINFORCED WITH 14 GA STEEL RIBS AT 6", REINFORCED WITH A WELDED PLATE FOR DOOR CLOSER MOUNTING.	LOCKSET SHALL BE SCHLAGE MODEL 200 CO WITH CONDUCTIVE HINGE IN FRAME. SCHLAGE B-600 SERIES COMMERCIAL SERIES DEAD BOLT	1/4" THICK SS "Z-SHAPED" ANTI-MICROBIAL PULL HANDLES

13/01/2020 7:25 PM
19R-118 C2 - C3.dwg
DWG: CE

No.	ISSUES/ REVISIONS	Date	App'd
1	BID SET	1-30-2020	
2	UPDATED CROSS SECTIONS	2-11-2020	
3			
4			
5			
6			




REFERENCES:



CHOW ENGINEERING, INC.
7770 PARDEE LANE, SUITE 100
OAKLAND, CA 94621
Phone: (510) 636-8500 Fax: (510) 636-8544
info@choweng.com
http://choweng.com

PROFESSIONAL SEAL:


DESIGNED BY:	DEAN WANZEK	
DRAWN BY:	DEAN WANZEK	
CHECKED BY:	X	
A-E PROJECT MANAGER:	LISA KIMURA	
ACT DIVISION MANAGER:	X	
ACT PROJECT MANAGER:	JASON AUYEUNG	
CONTRACT #	NUMBER	2019-_____

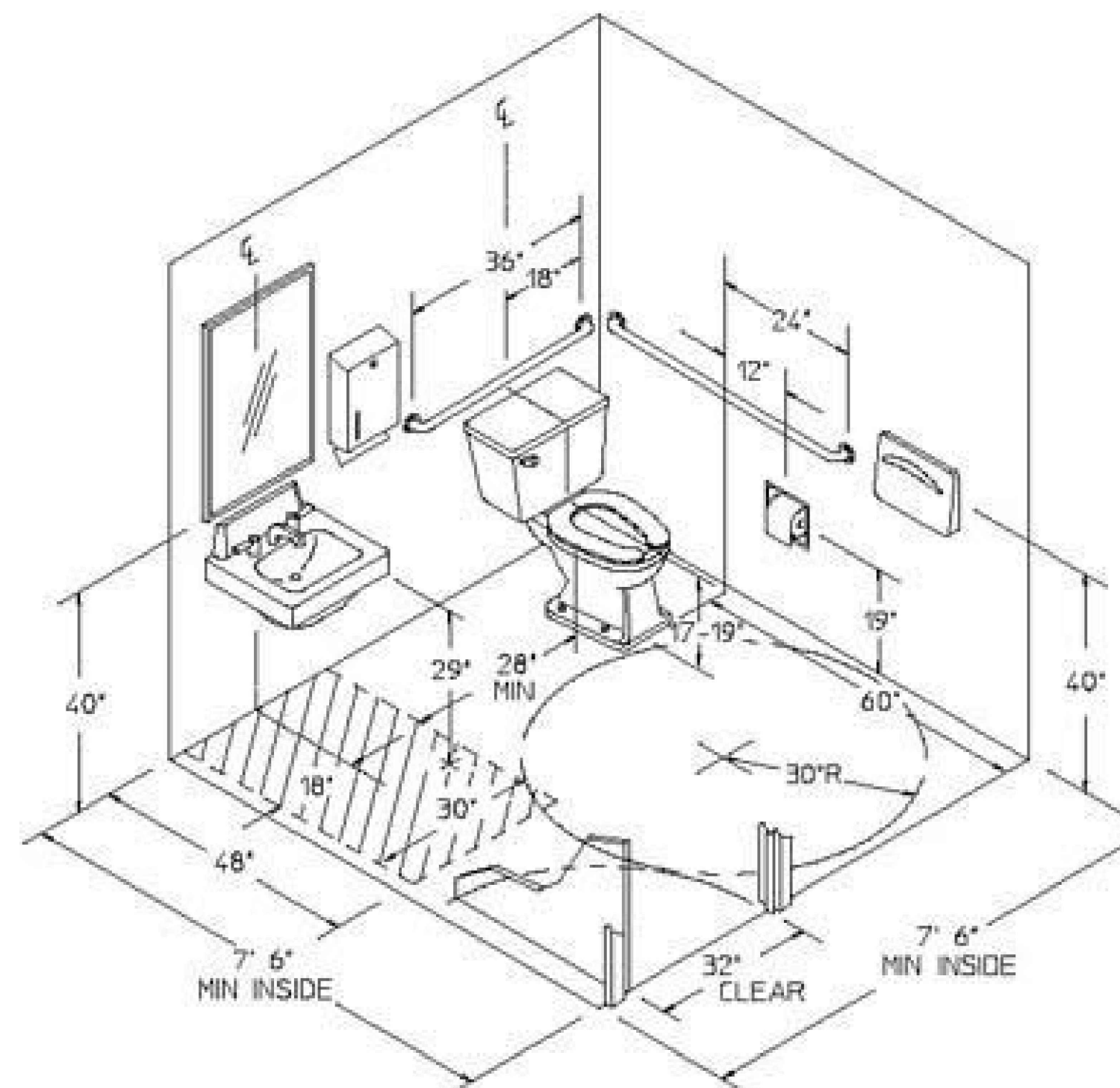
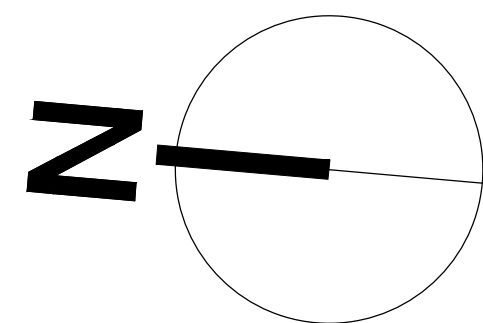


BRT NORTHERN LAYOVER BREAKROOM
OAKLAND, CA

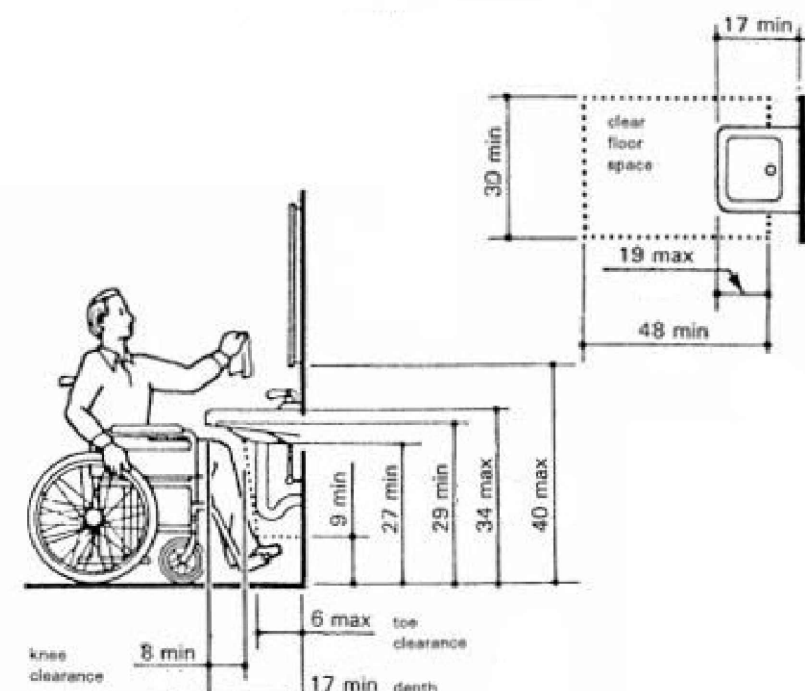
BRT NORTHERN LAYOVER BREAKROOM
ELEVATIONS

SIZE: D	SCALE: AS NOTED	DATE: 2-11-2020
AC TRANSIT PROJECT NUMBER: P2004	DRAWING NO.: C-5	
CAD FILE: 19R-118 C2 - C3 - 2007	SHEET 6 OF 8	

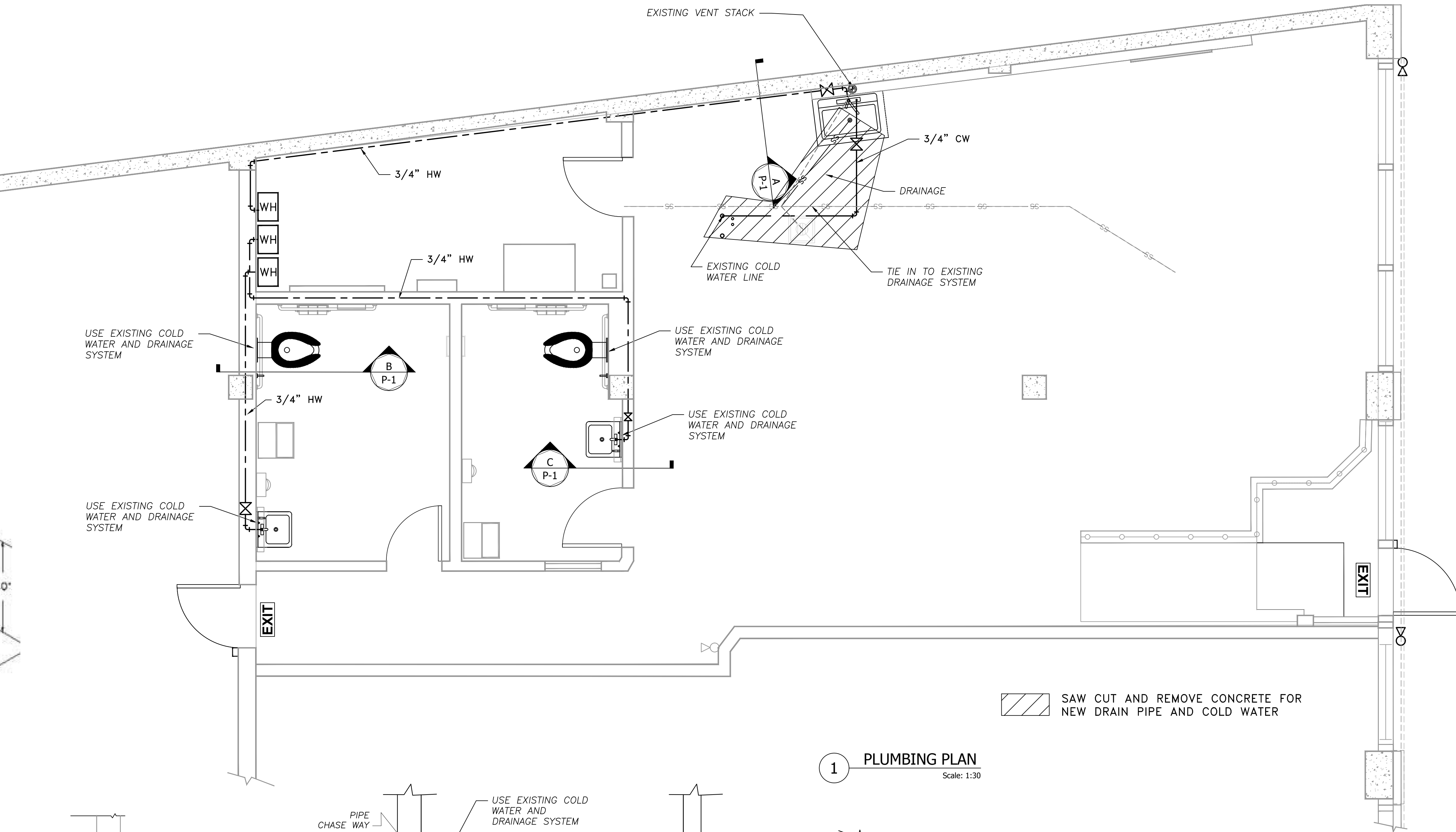
130/2020 2:25 PM
19R-118 C2 - C3.dwg
DWG: CE



ADA REQUIREMENTS

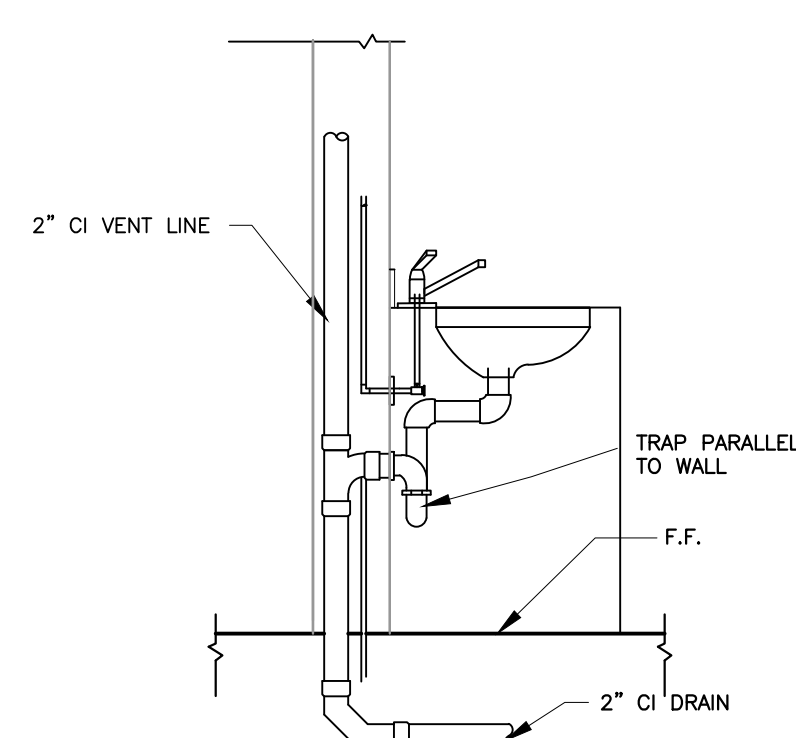


ADA REQUIREMENTS

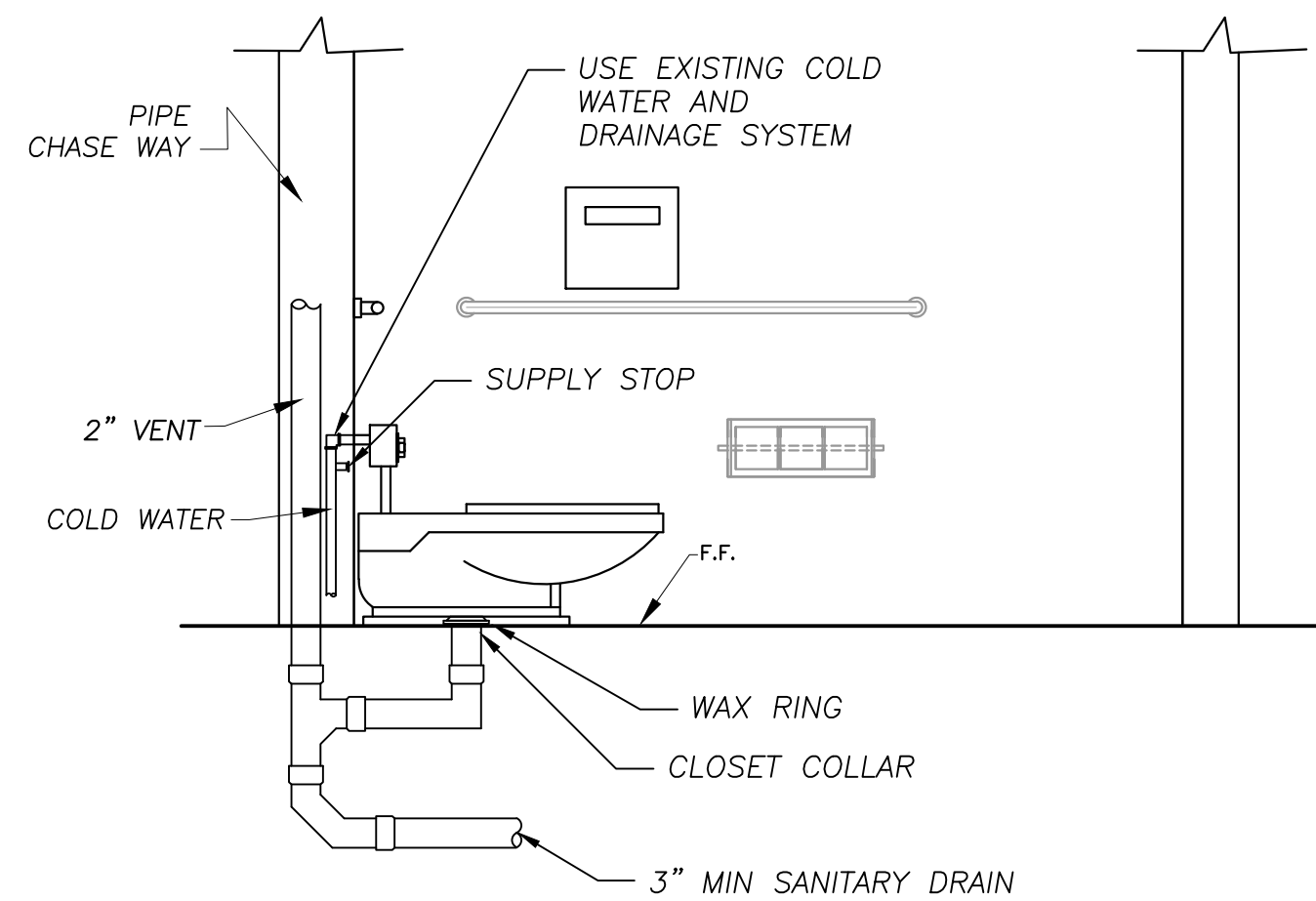


SAW CUT AND REMOVE CONCRETE FOR
NEW DRAIN PIPE AND COLD WATER

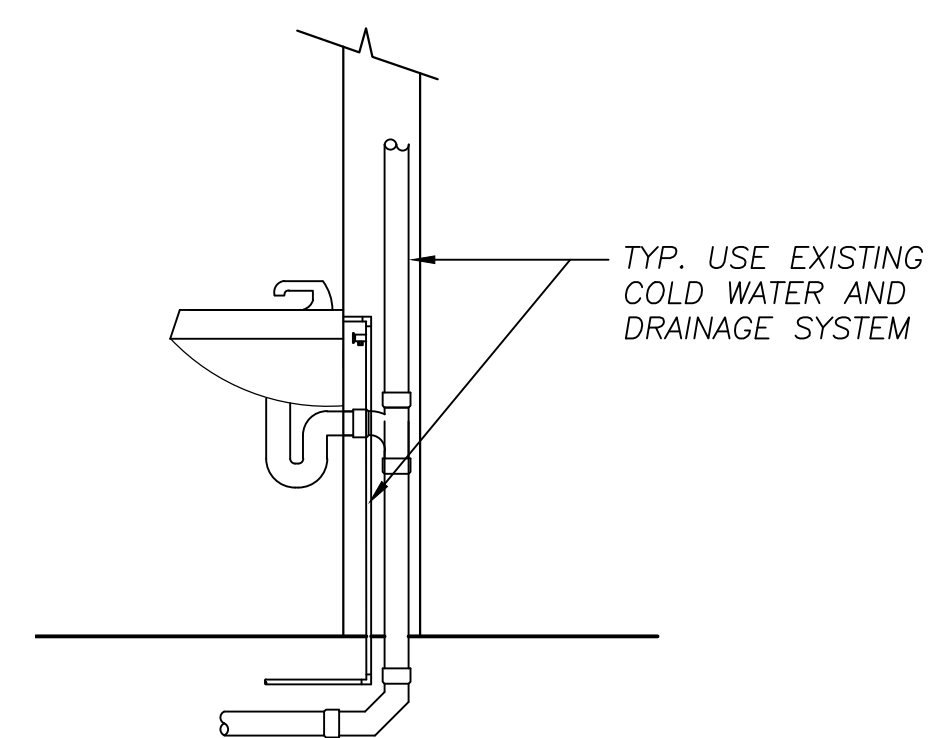
1 PLUMBING PLAN
Scale: 1:30



A BREAKROOM ELEVATION
P-1 Scale: NTS



B BATHROOM ELEVATION
P-1 Scale: NTS



C RESTROOM SINK
P-1 Scale: NTS


No.	ISSUES/ REVISIONS	Date	App'd
1	NEW DRAWING	2-11-2020	

REFERENCES:

CHOW ENGINEERING, INC.
7770 PARDEE LANE, SUITE 100
OAKLAND, CA 94621
Phone: (510) 636-8500 Fax: (510) 636-8544
info@choweng.com
http://choweng.com

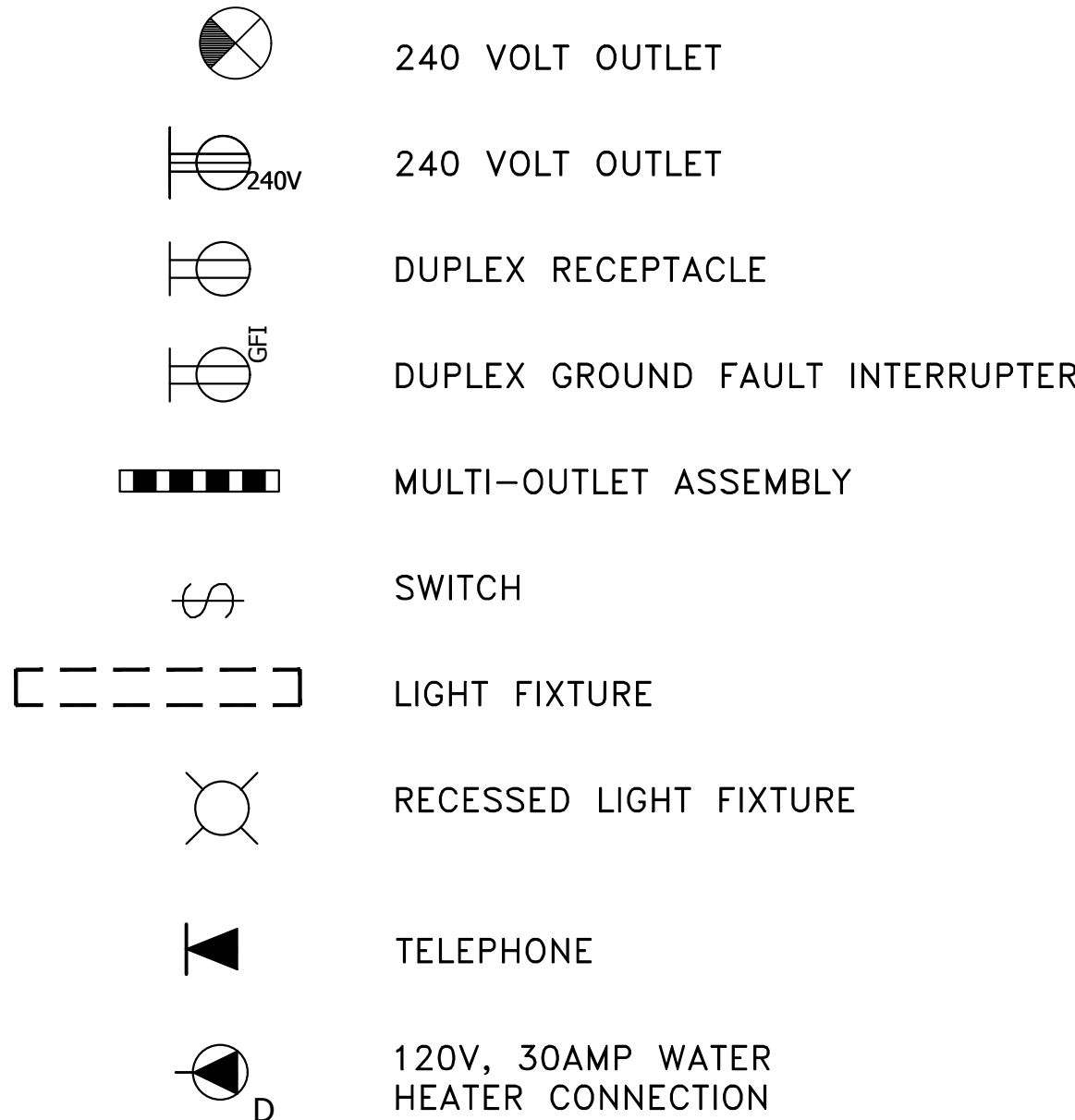
PROFESSIONAL SEAL:

CHOW ENGINEERING, INC.
7770 PARDEE LANE, SUITE 100
OAKLAND, CA 94621
Phone: (510) 636-8500 Fax: (510) 636-8544
info@choweng.com
http://choweng.com

PROFESSIONAL SEAL:	DESIGNED BY:	MANUEL CISNEROS		BRT NORTHERN LAYOVER BREAKROOM		
	DRAWN BY:	MANUEL CISNEROS		OAKLAND, CA		
	CHECKED BY:	DEAN WANZEK	BRT NORTHERN LAYOVER BREAKROOM PLUMBING PLAN			
	A-E PROJECT MANAGER:	LISA KIMURA				
	ACT DIVISION MANAGER:	X	SIZE: D	SCALE: AS NOTED	DATE: 2-11-2020	
	ACT PROJECT MANAGER:	JASON AUYEUNG	AC TRANSIT PROJECT NUMBER: P2004	DRAWING NO.: P-1		
	CONTRACT # NUMBER 2020-_____		CAD FILE: 19R-118 C2 - C3 - 2007	SHEET 7 OF 8		

LEGEND:

25. PHONE (DESKTOP LANDLINE)
26. 4'X5'X $\frac{3}{4}$ " GRADE A PLYWOOD MOUNTED 3' FROM FLOOR
27. EQUIPMENT MOUNTING RACK (PROVIDED BY AC TRANSIT)
29. AC TRANSIT CARD READER BOX
30. SECURITY CAMERA
35. NEW ELECTRICAL PANEL
37. NEW MINI SPLIT
38. NEW EMERGENCY EXIT LIGHT
39. POWER STRIP
41. RESTROOM LIGHTS
43. BREAKROOM/KITCHEN LIGHTS



PANEL - L-1		120/240 VOLTS 1 PHASE 3 WIRE						MAIN		MOUNTING	
AC TRANSIT GREYHOUND TERMINAL TENANT IMPROVEMENTS LOCATION - ELECTRICAL ROOM		TYPE		/PLUG-IN		125 Amps		Flush <input type="checkbox"/> CB		<input checked="" type="checkbox"/> Surface <input type="checkbox"/> Flush	
CKT NO	LOAD DESCRIPTION & LOCATION	BRKR		PHASE KVA LOAD				BRKR		LOAD DESCRIPTION & LOCATION	CKT NO
		A	P	ØA	ØB	ØA	ØB	A	P		
1	WALL RECEPTACLES	15	1	0.72		0.984		20	2	SERVER ROOM A/C	2
3	WALL RECEPTACLES	15	1		0.9		0.984				4
5	SERVER ROOM RECEPTACLES	15	1	1.08		3		30	1	ELEC WATER HEATER 1	6
7	KITCHEN APPLIANCE RECEP	20	1		1.08		3	30	1	ELEC WATER HEATER 2	8
9	MICROWAVE	20	1	1.1					1	SPARE	10
11	REFRIGERATOR	20	1		1.1		3	30		ELEC WATER HEATER 3	12
13	EXIT LIGHTS	15	1	0.06							14
15	LIGHTING BREAK ROOM	20	1		0.296	2.5	2.5	30	2	HEATER/AC (FUTURE)	16
17	LIGHTING: RESTROOMS, HALLWAY, ELECTRICAL ROOM	15	1	0.36		0.07				EXHAUST FANS	18
19	HAND DRYER	15	1		0.53					SPACE	20
21	REST ROOM RECEPS	15	1	0.36						SPACE	22
23	HAND DRYER	15	1		0.53					SPACE	24
25	SPACE									SPACE	26
27	MAIN CIRCUIT BREAKER	125	2							SPACE	28
29										SPACE	30
DEMAND LOAD SUMMARY											
		PH A		PH B							
TOTAL CONNECTED RECEPTACLE LOAD		1.8	KVA	0.90	KVA						
RECEP LOAD FIRST 10 KVA @ 100%		1.8	KVA	0.90	KVA						
APPLIANCE LOAD @ 100%		7.1	KVA	9.24	KVA						
TOTAL MOTOR LOAT AT 100%			KVA	0	KVA						
TOTAL LIGHTING LOAD @ 125%		0.525	KVA	0.37	KVA						
HEATING AND A/C @ 125%		1.318	KVA	1.23	KVA						
PROPOSED DEMAND LOAD:		10.74	KVA	11.74	KVA						
PROPOSED DEMAND LOAD:		89.5	AMPS	97.83	AMPS						
FUTURE HVAC @125%		3.125	KVA	3.125	KVA						
FUTURE HVAC AMPS		26.0	AMPS	26.0	AMPS						

ELECTRICAL SHEET NOTES

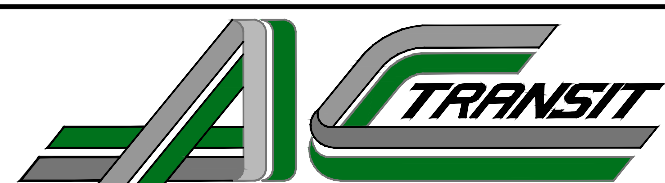
1. INSTALL 1" CONDUITS BETWEEN EACH CAMERA LOCATION AND EQUIPMENT PLYWOOD PANEL IN ELECTRICAL ROOM.
2. ONE SWITCH FOR LIGHTS 1,2,3,4. OTHER SWITCH FOR LIGHTS 5,6,7,8.
3. ADDITIONAL SWITCH IS FOR EXISTING CORRIDOR LIGHTS.
4. INSTALL 1" CONDUIT BETWEEN TELEPHONE OUTLET AND TELEPHONE BOX ABOVE ELECTRICAL PANEL.
5. TANKLESS WATER HEATERS TO BE HARD-WIRED TO INDIVIDUAL 30A CIRCUITS WITH #10AWG SUPPLY CONDUCTORS AND GFI BREAKERS.
6. SUPPLY AND INSTALL 125 AMP PANEL WITH 2-#1 + 1-#1AWG N + 1-#6 GROUND CONDUCTOR WITHIN 1.5" CONDUIT EXTENDING TO ELECTRICAL ROOM OF GREYHOUND TERMINAL.
7. BREAKROOM/KITCHEN LIGHTS TO HAVE EXTRA 3FT OF WIRING TO ACCOMMODATE FUTURE DROP CEILING AT +11.5 FT ABOVE FF.
8. INSTALL 1" CONDUIT FROM EACH CARD READER BOX TO PLYWOOD PANEL IN ELECTRICAL ROOM. INSTALL A SECOND 1" CONDUIT FROM THE CONDUCTIVE HINGE IN EACH DOOR TO THE PLYWOOD PANEL IN THE ELECTRICAL ROOM.

2 ELECTRICAL PLAN

Scale: 1:30

13/02/2020 7:25 PM
19R-118 C2 - C3.dwg
DWG: CE

No.	ISSUES/ REVISIONS	Date	App'd
1	BID SET	1-24-2020	
2	NEW CONDUITS	2-11-2020	
3	DELETE MINI SPLIT	2-11-2020	
4	NEW CONNECTION	2-11-2020	



REFERENCES:



CHOW ENGINEERING, INC.
7770 PARDEE LANE, SUITE 100
OAKLAND, CA 94621
Phone: (510) 636-8500 Fax: (510) 636-8544
info@choweng.com
http://choweng.com

PROFESSIONAL SEAL:

DESIGNED BY: BILL THOMPSON
DRAWN BY: DEAN WANZEK
CHECKED BY: X
A-E PROJECT MANAGER: LISA KIMURA
ACT DIVISION MANAGER: X
ACT PROJECT MANAGER: JASON AUYEUNG
CONTRACT # NUMBER 2020-_____



BRT NORTHERN LAYOVER BREAKROOM
OAKLAND, CA

BRT NORTHERN LAYOVER BREAKROOM
ELECTRICAL PLAN

SIZE: D SCALE: AS NOTED DATE: 1-30-2020
AC TRANSIT PROJECT NUMBER: P2004 DRAWING NO.: E-1
CAD FILE: 19R-118 C2 - C3 - 2007 SHEET 8 OF 8