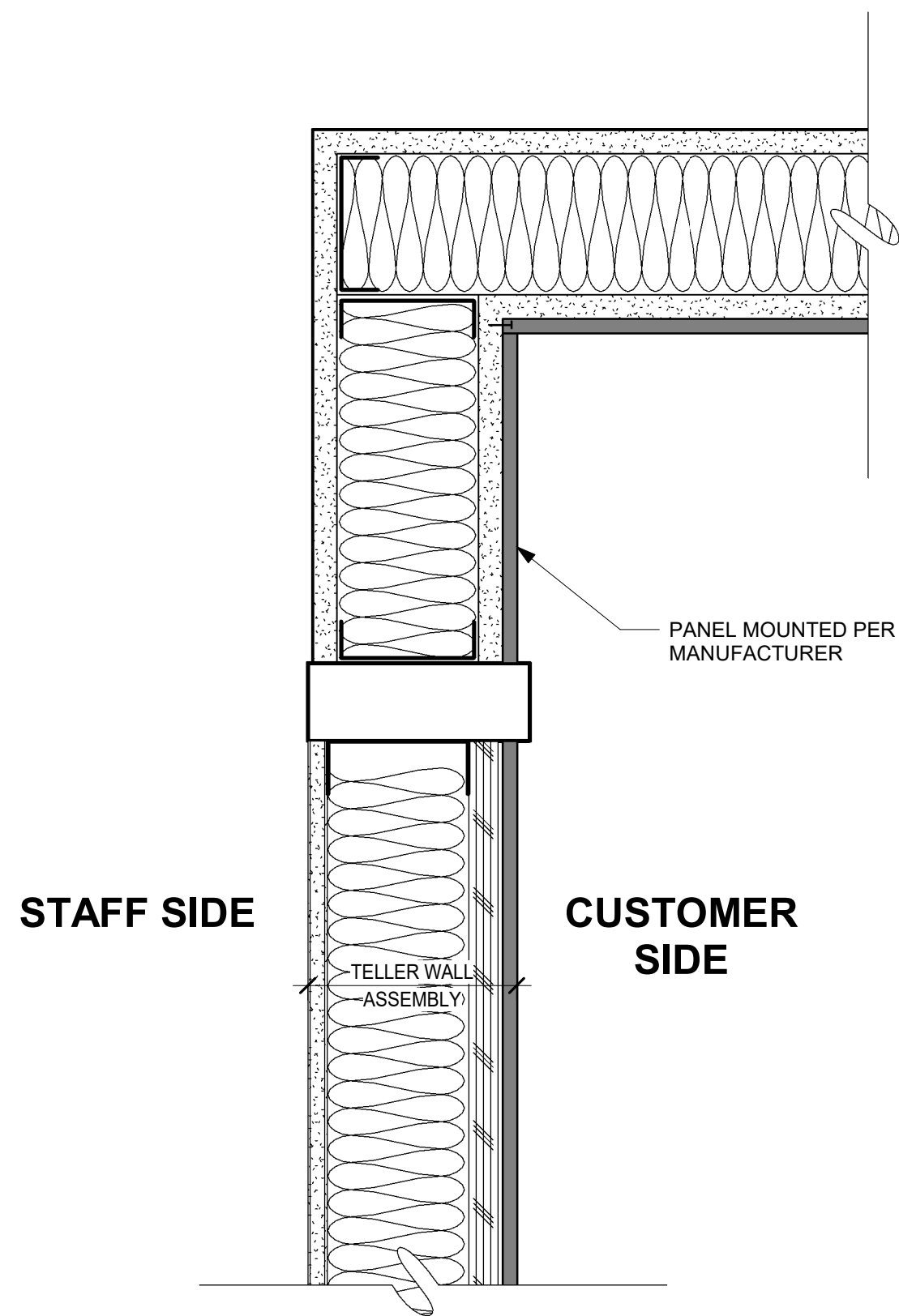
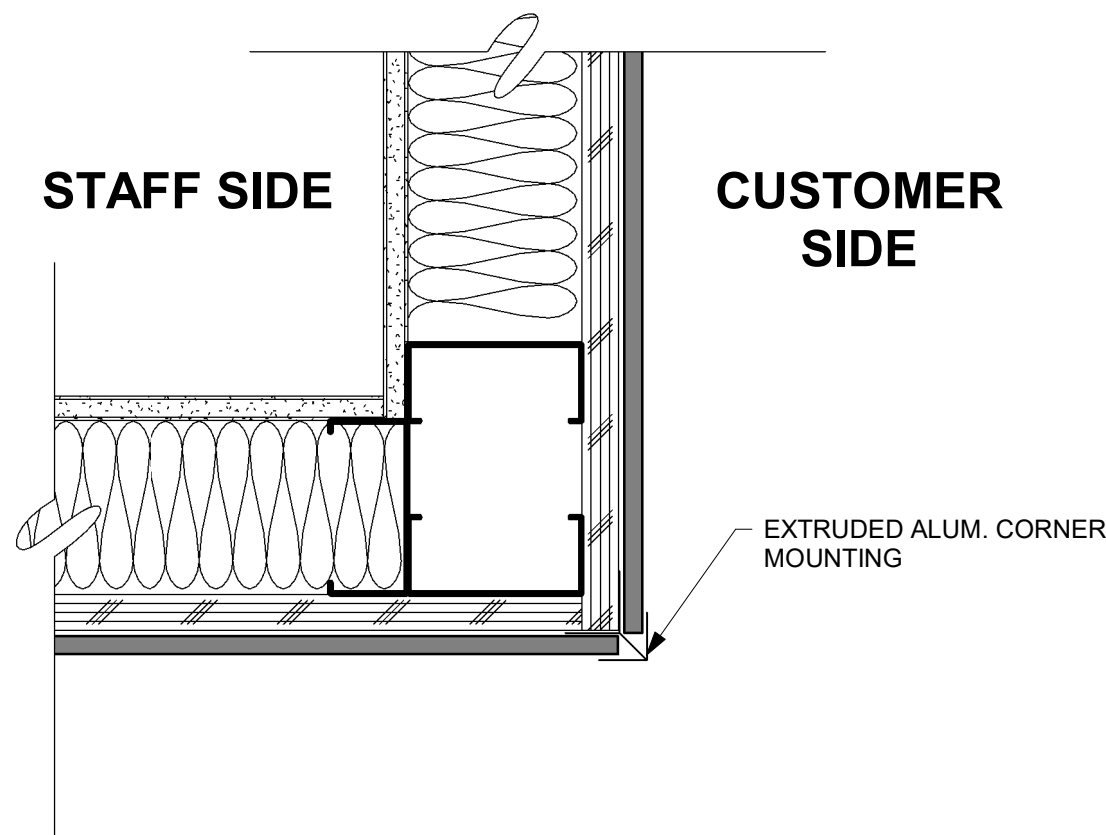


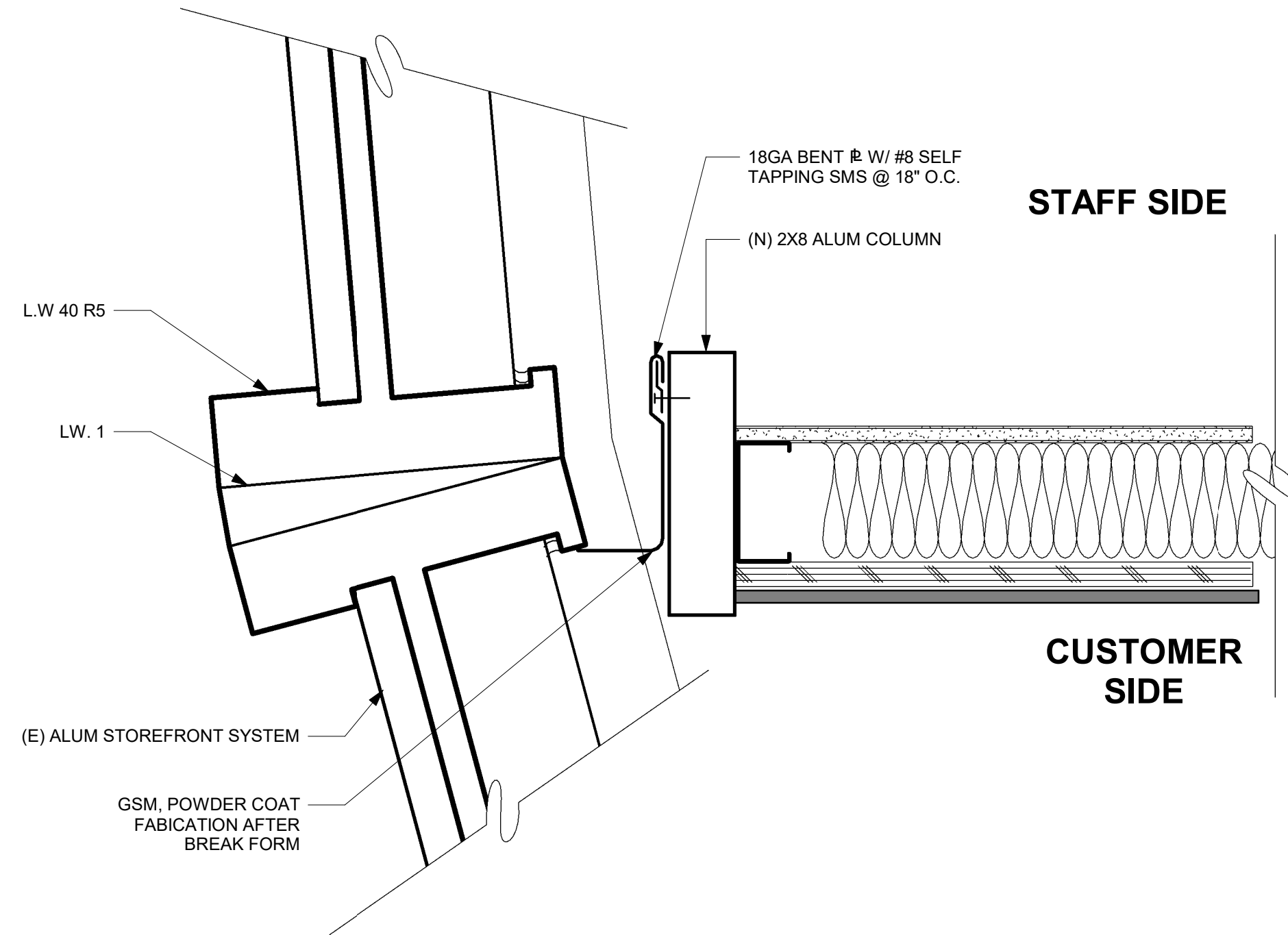
12/4/2018 4:35:59 PM
C:\Users\sabirna.richter\Documents\AC Transit-CSC-_sabirna.richter.rvt



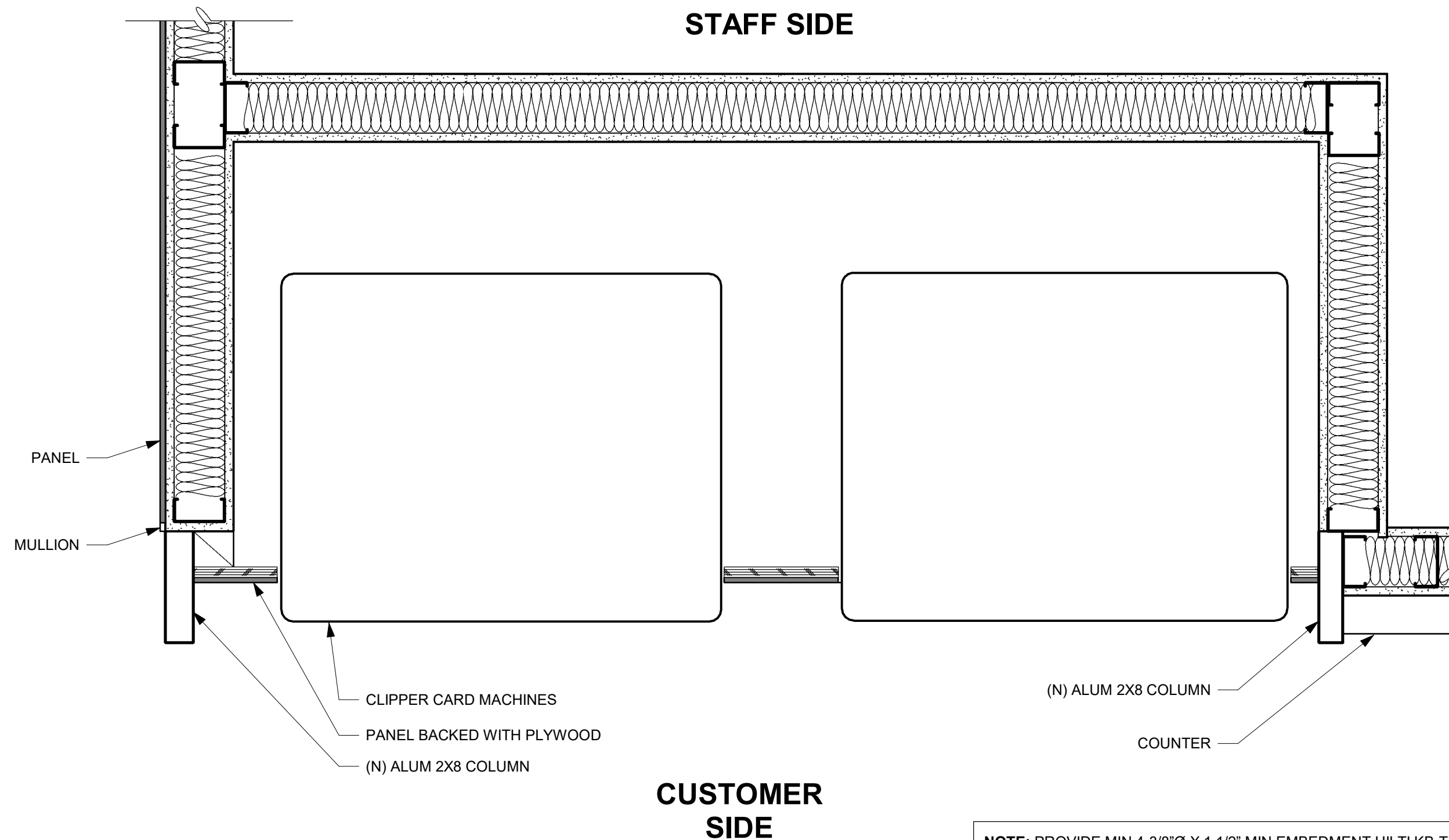
2 (N) TELLER WALL TO (N) PHOTO WALL
3" = 1'-0"



3 TELLER WALL CORNER WITH (N) SUPPORT
3" = 1'-0"



1 TELLER WALL TO (E) EXIT STOREFRONT
3" = 1'-0"



4 CONCEALED ACTION CAM CLOSER
1 1/2" = 1'-0"

NOTE: PROVIDE MIN 4-3/8"Ø X 1 1/2" MIN EMBEDMENT HILTI KB-TZ ANCHORS AT EACH AVM UNIT (1 EACH CORNER). EMBEDMENT DEPTH IS DEPTH INTO (E) LTWT CONC FILL ON METAL DECK AND DOES NOT INCLUDE ANY EXIST FLOOR FINISHES. VERIFY DIAMETER OF EXIST ANCHOR HOLES PROVIDED - WHERE DIAMETER OF HOLE IS GREATER THAN 7/16", PROVIDE MIN 3/16" PLATE WASHER WITH O.D. TWICE THAT OF THE EXIST HOLE DIAMETER.

REV	DESCRIPTION	INIT	DATE
95%	CONSTRUCTION DOCUMENTS		10/16/18
100%	CONSTRUCTION DOCUMENTS		11/19/18
	ISSUED FOR PLAN CHECK		11/19/18
	ISSUED FOR PERMIT		12/04/18
	ISSUED FOR BID		10/16/18
	ISSUED FOR CONSTRUCTION		



117 PARK PLACE
POINT RICHMOND
CALIFORNIA 94801
(510) 236-7435
www.intres.com

PROJECT:
**Customer Service
Center - Tenant
Improvements**

1600 Franklin St,
Oakland, CA 94612

SHEET TITLE:
Teller Wall Details

AC Transit
Dir. Capital Projects: Joe Callaway
ACT Project Manager: Farhad Bolourchi
Project Number: P2071
Contract Number: 2016-1349D
Architecture & Engineering
A-E Project Number: 2016-077-01
Drawn by: SER
Designer: BSF
A-E Project Manager: Brant Fetter
Peer Review Checker
Sheet Size: 36" x 24" [Arch D]
Date: 10-16-2014

SHEET NUMBER:

A503